

CI/SfB	(31)	Zt4
CAW P10		
Uniclass L675:P91		

Description

TP652 LL is a soft and flexible open cell polyurethane foam, impregnated with an acrylic based, flame retardant resin. It is supplied as pre-compressed rolls with a liner-less self-adhesive side to aid initial location.

Colour

Anthracite and grey (step band)

Standard Sizes

Joint Depth* 1)		Passive Housing Fully Weathertight	New Building Fully Weathertight	Renovation Concealed Installation **	Thermal Insulation ***		Contents
Tape Width (mm)	Size	Tape Thickness (mm)	Tape Thickness (mm)	Tape Thickness (mm)	Tape Thickness (mm)	Rolls /Box	/Box (m)
58 #	XS	4-7	4-8	4-9	15	4	36
66	XS	4-7	4-8	4-9	15	4	36
72 #	XS	4-7	4-8	4-9	15	3	27
77	XS	4-7	4-8	4-9	15	3	27
83 #	XS	4-7	4-8	4-9	15	3	27
88	XS	4-7	4-8	4-9	15	3	27
58 #	S	6-10	6-12	6-14	22	4	32
66	S	6-10	6-12	6-14	22	4	32
72 #	S	6-10	6-12	6-14	22	3	24
77	S	6-10	6-12	6-14	22	3	24
83 #	S	6-10	6-12	6-14	22	3	24
88	S	6-10	6-12	6-14	22	3	24
58 #	M	8-15	8-18	8-21	33	4	24
66	M	8-15	8-18	8-21	33	4	24
72 #	M	8-15	8-18	8-21	33	3	18
77	M	8-15	8-18	8-21	33	3	18
83 #	M	8-15	8-18	8-21	33	3	18
88	M	8-15	8-18	8-21	33	3	18
58 #	L	10-20	10-24	10-28	45	4	20
66	L	10-20	10-24	10-28	45	4	20
72 #	L	10-20	10-24	10-28	45	3	15
77	L	10-20	10-24	10-28	45	3	15
83 #	L	10-20	10-24	10-28	45	3	15
88	L	10-20	10-24	10-28	45	3	15
58 #	XL	15-30	15-36	15-42	66	4	12
66	XL	15-30	15-36	15-42	66	4	12
72 #	XL	15-30	15-36	15-42	66	3	9
77	XL	15-30	15-36	15-42	66	3	9
83 #	XL	15-30	15-36	15-42	66	3	9
88	XL	15-30	15-36	15-42	66	3	9

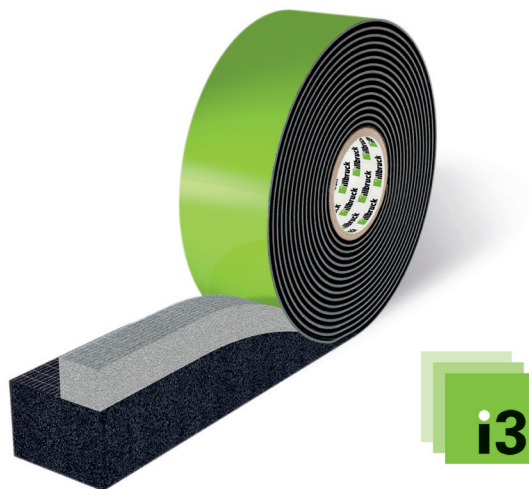
1) Dimensional tolerance according to DIN 7715 P3

* TP652 should fill the window construction depth as far as possible. For technical and/or aesthetic reasons, the next lowest tape width respective to the window frame width should be selected. Dimensional tolerance according to DIN 7715 P3.

** After 3 months exposure, the tape must be protected from UV.

*** As thermal insulation only. Not weather or airtight.

Sizes available on a made to order basis only.



TP652 LL

Trio + Linerless



Usage / Purpose

TP652 LL seals window and door perimeter joints against wind and driving rain whilst providing thermal and acoustic insulation for the full joint depth. The innovative additional 'step' band provides higher compression which fulfils airtightness requirements for Passiv-House, new build and renovation projects. TP652 LL ensures vapour control based on 'inside tighter than outside' principles in accordance with RAL window installation guidelines. The patented 'liner-less' technology provides fast and easy application.

Key Benefits

- Multi-functional application
- 600 Pa, BG1 & BGR accreditation (DIN 18542)
- Complies with RAL assembly guidelines
- Liner-less for faster & easier application
- Achieves up to 61 dB sound reduction (if capped)

Trio + Linerless

Technical Information

Property	Test Method	Result
Building Classification	DIN 4102	B1, difficult to ignite
Exposure Class for Impregnated Foam Tapes	DIN 18542	BG1 + BGR
Thermal Conductivity	DIN 52612	$\lambda = 0.048 \text{ W/(m.K)}$
Water Vapour Gradient		Inside more vapour tight by higher compression achieved by the internal step tape
Air Permeability	DIN EN 12114	$\alpha < 0.1 \text{ m}^3/[\text{h} \cdot \text{m} \cdot (\text{daPa})^{2/3}]$
Weathertight Against Driving Rain	DIN 18542	The requirements of the DIN standard are met up to the described joint sizes, giving a minimum of 600 Pa
Resistant to Driving Rain	EN 1027	600 Pa
Acoustic Insulation	EN ISO 717-1	61 dB in a 20 mm joint in combination with SP525
Compatibility with Conventional Materials	DIN 18542	The requirements of the DIN standard are met. Compatibility with solvent or plasticizer containing products has to be tested. Compatibility with sealants has to be tested
Service Temperature		-30°C to +80°C
Storage		Store rolls horizontally and in original carton between +1°C and +20°C in dry conditions and away from direct sunlight. Re-seal packaging between use to prevent expansion during storage
Shelf Life		9 months when stored in its original unopened containers

Preparation

- A tape measure, flat blade and scissors or knife are required for installation.
- Ideally the tape should be stored and used at temperatures between 10-20°C. High temperatures accelerate the tape expansion process and low temperatures slow it down.
- The window opening should be continuous, and free from debris which may protrude into the perimeter joint.
- Clean the edges of the window frame.

Application

- Select the tape dimensions according to the table after determining the window frame depth and joint width.
- Make sure that the grey step band is pointing towards the room interior.

- Prior to applying from a new roll, cut off the wedge shaped section at the start of the roll.
- Add 20 mm/m when cutting tape to length.
- If the joint width is narrow in relation to the tape thickness, spraying a misting of water into the joint may assist with frame installation.
- To ensure a weathertight seal to the bottom corners, apply a 10 mm diameter bead of SP525 to bottom corners of the window opening to match joint depth of tape (Fig 1).
- For the sill application, cut appropriate length of tape to suit opening width, ensuring a tight fit to each corner. Apply the TP652 LL, with self-adhesive face down and ends bedded in the SP525 beads (Fig. 2).
- To accommodate setting blocks, notch out the tape around the blocks using a sharp knife (Fig. 3 & 4), ensuring a minimum 20 mm of tape remains to the external face of the tape. To maintain optimal airtightness, seal around the inner face of the setting block with SP525.
- Apply the tape to the head and two sides of the window, with the head application to full opening width and the sides tightly butting up to the underside of the head application (Fig. 5).
- The window can be fixed either through the frame or by using fixing lugs/ brackets.
- If frame packers are required, insert the packer between the pre-compressed TP652 LL and the window opening, fix the frame and then remove the packers. The tape will subsequently expand and fully seal the gap with the frame remaining secured in position.

“i3” Window Sealing System

- Part of the state of the art, ift- approved sealing system, with a 15 year guarantee.* This system fulfils the EnEV requirements with regards to airtightness.; *Under the conditions specified by the manufacturers. Only valid on receipt of the correct registration documents in accordance with terms and conditions, available on request.

Please Note

The compatibility of any paint or sealant coverings must be tested.

Health & Safety Precautions

Safety data sheet must be read and understood before use.

TP652 LL

Trio + Linerless

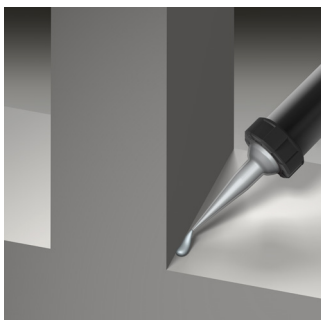


Figure 1: Apply a 10 mm diameter bead of SP525 to bottom corners of the window opening to match joint depth of tape

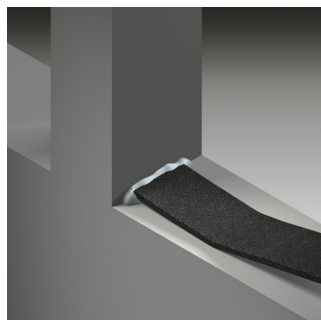


Figure 2: Apply the TP652, with self-adhesive face down and ends bedded in the SP525 beads



Figure 3: To accommodate setting blocks, notch out tape

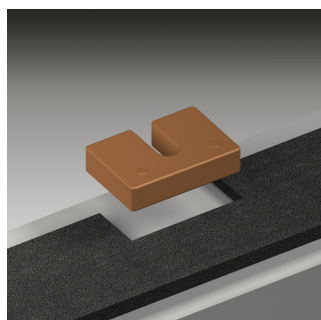


Figure 4: To accommodate setting blocks, notch out tape



Figure 5: Apply the tape to the head and two sides of the window

Technical Service

Tremco CPG UK Limited has a team of experienced Technical Sales Representatives who provide assistance in the selection and specification of products. For more detailed information, service and advice, please call Customer Services on 01942 251400.

Guarantee / Warranty

Tremco CPG UK Limited products are manufactured to rigid standards of quality. Any product which has been applied (a) in

accordance with Tremco CPG UK Limited written instructions and (b) in any application recommended by Tremco CPG UK Limited, but which is proved to be defective, will be replaced free of charge.

No liability can be accepted for the information provided in this leaflet although it is published in good faith and believed to be correct. Tremco CPG UK Limited reserves the right to alter product specifications without prior notice, in line with Company policy of continuous development and improvement.



Tremco CPG UK Limited
Coupland Road
Hindley Green, Wigan WN2 4HT
United Kingdom
T: +44 1942 251400
F: +44 1942 251410

info.uk@tremcocpg.com
www.tremcocpg.eu